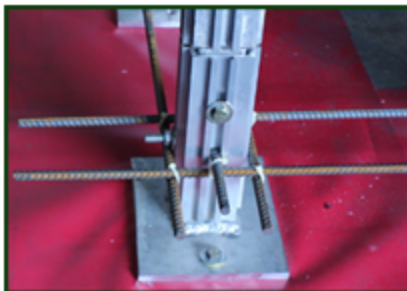


The RDS Tornado/Safe Room

The RDS Tornado Shelter/Safe Room can be added to any room in your existing home, in your garage or be incorporated into a Cat Five home. The combination of our patented RDS aluminum beam system and steel panels bolted together as one unit, secured by a concrete foundation provides a safe place to quickly access when tornadoes or severe storms strike. The shelter can be tailor made to fit your specific needs. The FEMA 320 rated doors can be 42" wide and 84" high for easy access or be made to whatever size best suits your requirements.

Once a shelter is erected it can be finished to include plumbing and electricity. It can be insulated, fitted with dry wall and painted so the room can be fully utilized at all times and will look like a regular room from the inside. You will have a comfortable room to relax in that will provide you and your family safety in the event of a severe weather event. The shelters are quickly installed with our trained professional installers. If you have a builder in the family or a local contractor you like to use, we can send a supervisor or we can provide an instructional step by step installation video if the builder feels comfortable erecting the shelter himself.

Let RDS build you a safe place to go within your own home.

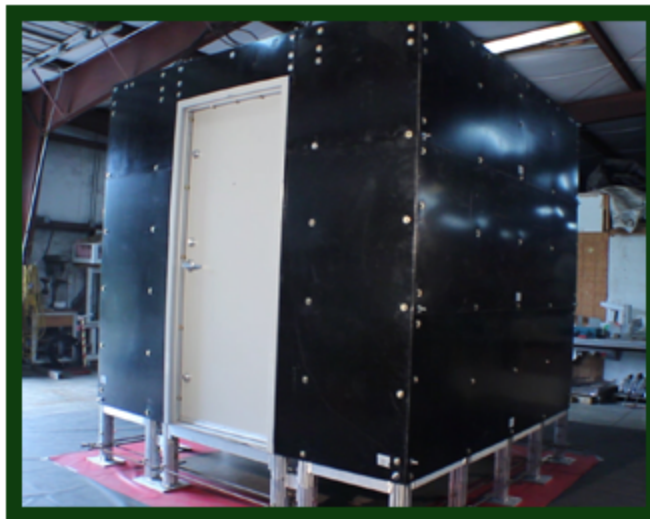


Gary Davis, PE is a structural engineer registered in twenty states. He explains the structural advantages of the shelter as follows:

"The RDS tornado shelter/safe room has been designed to withstand 250 mph sustained winds. When a tornado hits it reduces everything in its path to rubble often leaving only a clean slab.

With this system, every element of the shelter is locked to every other element, from the steel panels on the side to the structural elements that anchor it into the concrete foundation.

This creates a cohesive unit that remains intact despite tremendous force. The foundation is specifically engineered for the size and weight of the shelter. When doing this engineering, we factor in a 1.5 to 1.7 safety factor, which means that conditions of 50-70% more than 250 mph winds would be required to lift the shelter out of the ground, a highly unlikely circumstance."



See more at www.catfivehouses.com Or Call 843 375 2424